



# Knights Village

## Building Locations

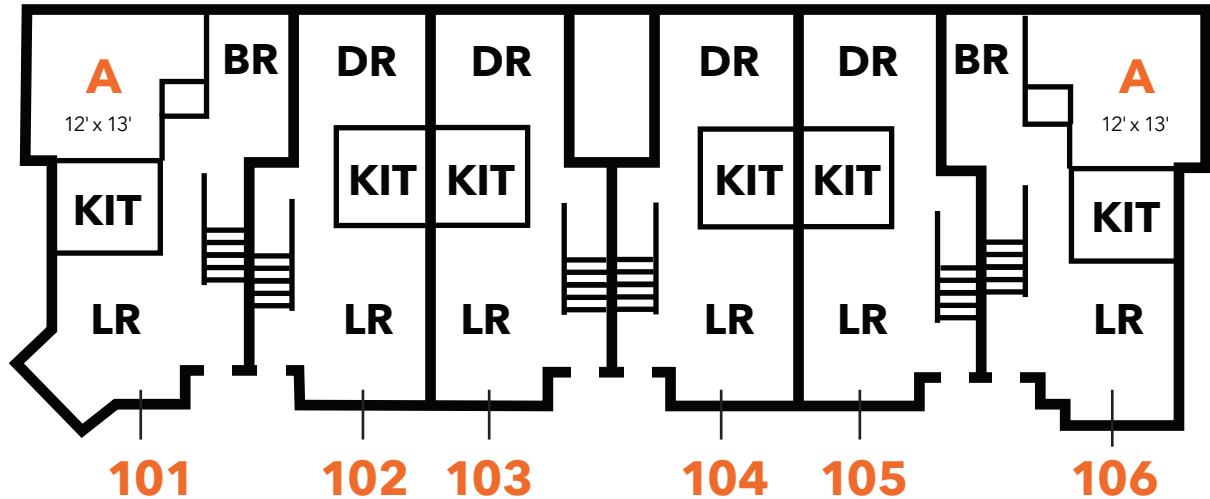


- ① Mendota Haus
- ② Galena Haus
- ③ Dubuque Haus
- ④ St. Sebald Haus
- ⑤ Saginaw Haus

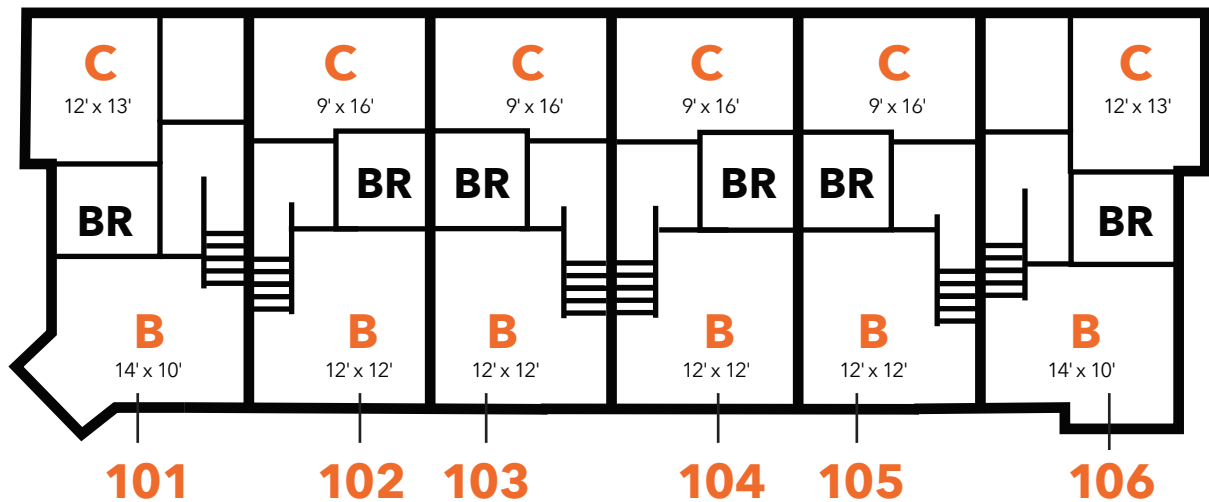




### First Floor



### Second Floor



Bedrooms in Mendota Haus (A, B, C) are two-person rooms.

Room dimensions are approximate within four inches.

Closets are not included in dimensions or shown on this floor plan.

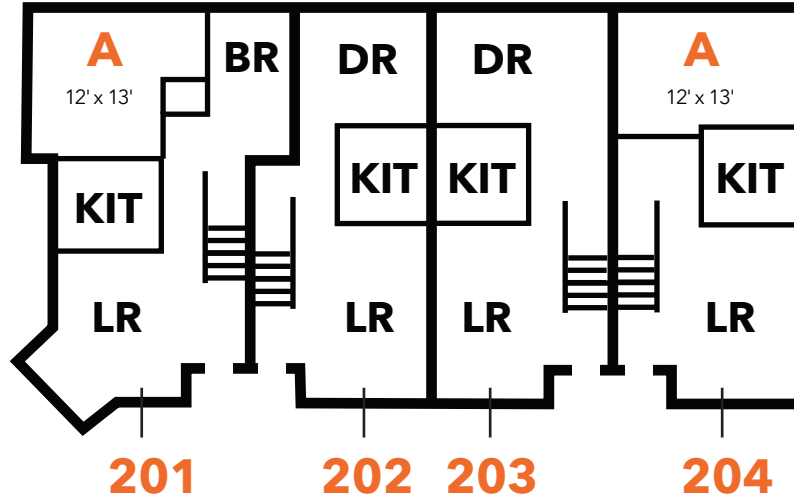
Living room, dining room and kitchen dimensions are not listed as they are furnished and vary by building.

Ceiling height is approximately 8'.

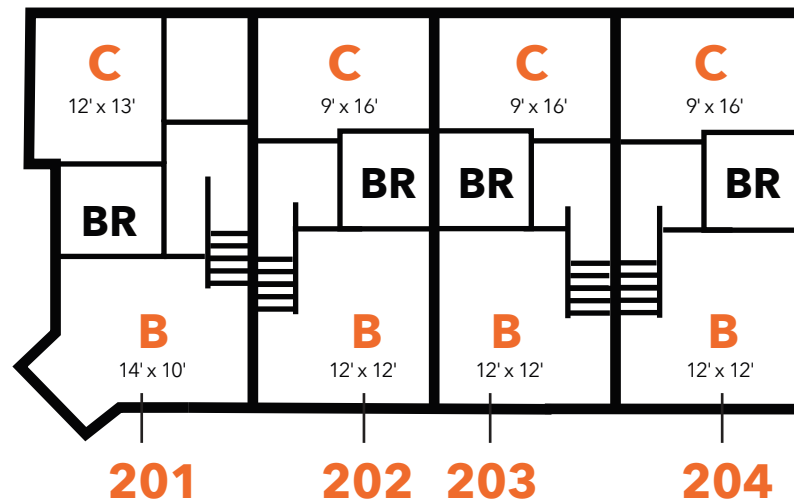
**BR** = Bathroom    **DR** = Dining Room  
**LR** = Living Room    **KIT** = Kitchen



### First Floor



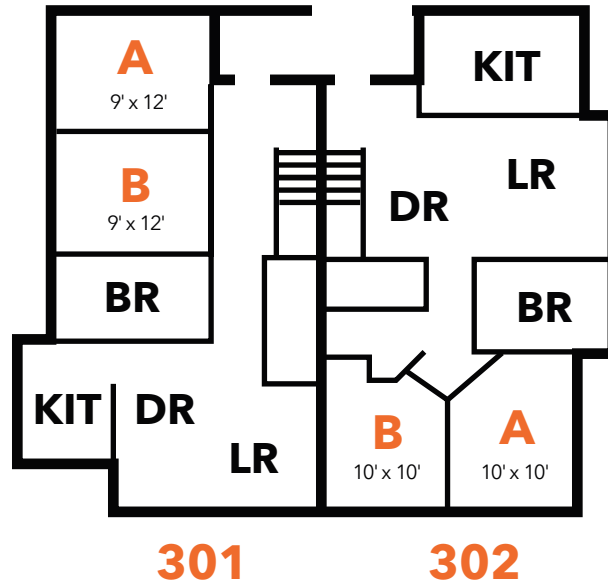
### Second Floor



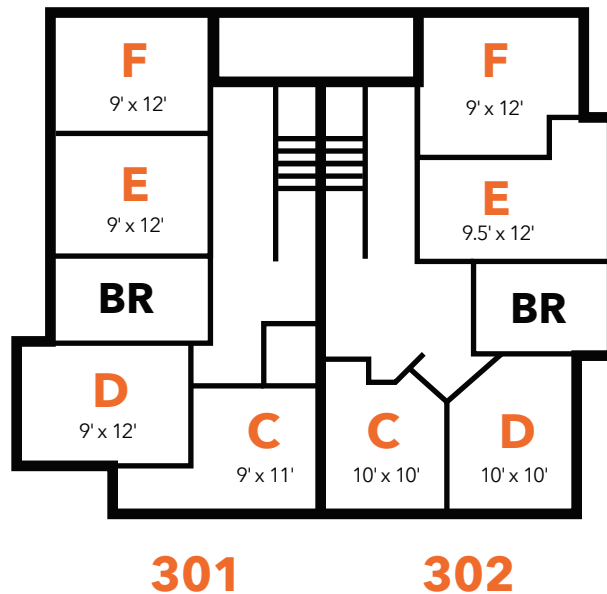
Bedrooms in Galena Haus (A, B, C) are two-person rooms.  
 Room dimensions are approximate within four inches.  
 Closets are not included in dimensions or shown on this floor plan.  
 Living room, dining room and kitchen dimensions are not listed as they are furnished and vary by building.  
 Ceiling height is approximately 8'.

**BR** = Bathroom      **DR** = Dining Room  
**LR** = Living Room    **KIT** = Kitchen

### First Floor



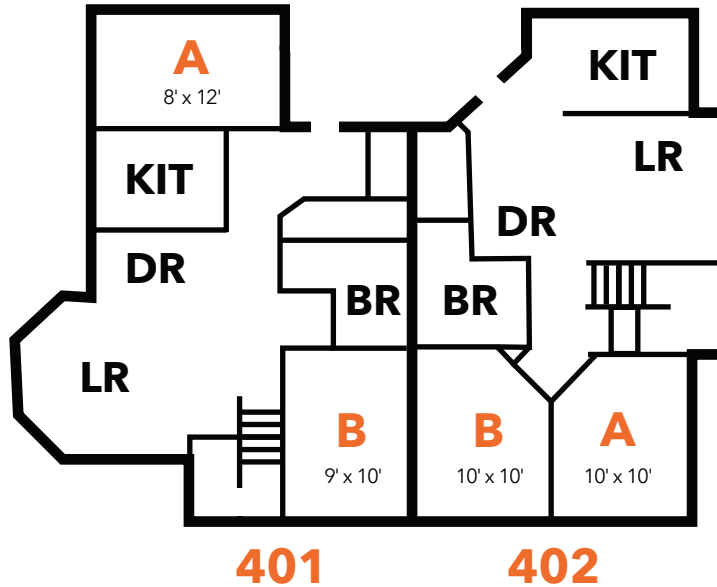
### Second Floor



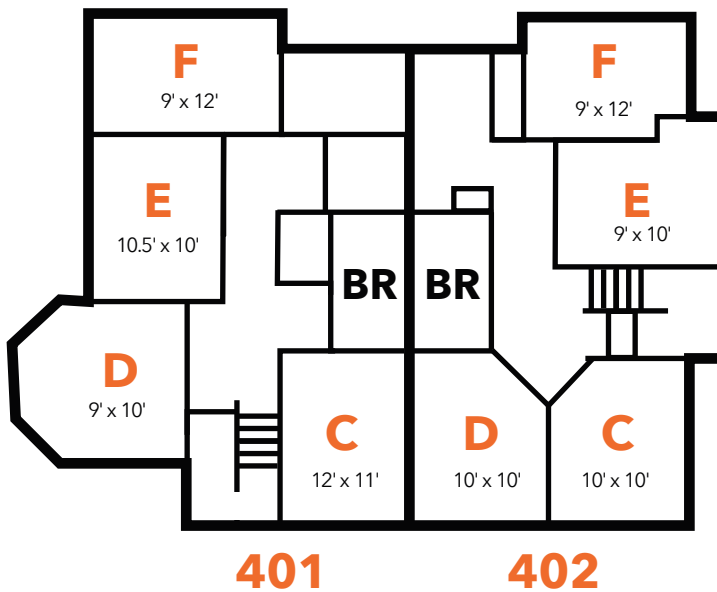
Bedrooms in Dubuque Haus are single rooms and carry an additional single-room charge.  
 Room dimensions are approximate within four inches.  
 Closets are not included in dimensions or shown on this floor plan.  
 Living room, dining room and kitchen dimensions are not listed as they are furnished and vary by building.  
 Ceiling height is approximately 8'.

**BR** = Bathroom    **DR** = Dining Room  
**LR** = Living Room    **KIT** = Kitchen

### First Floor



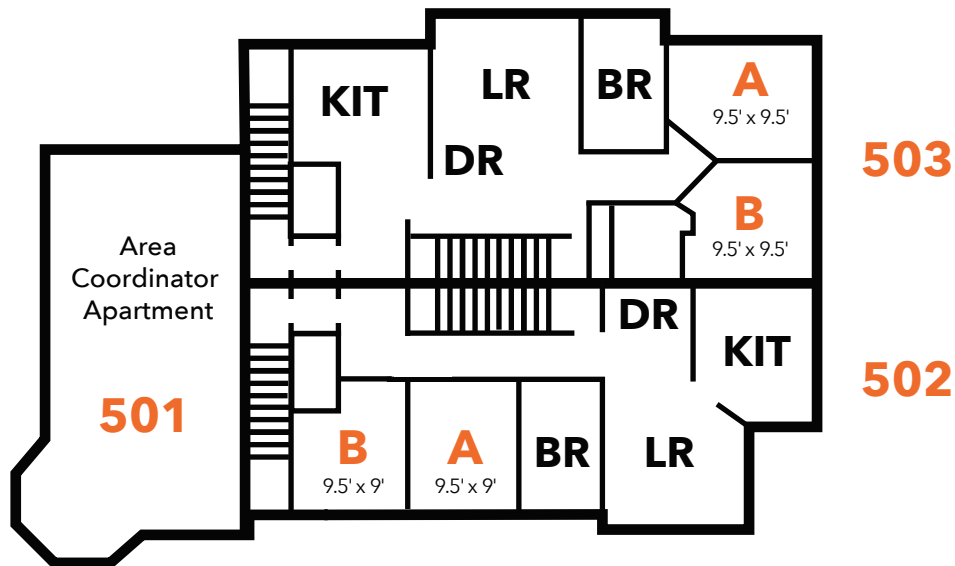
### Second Floor



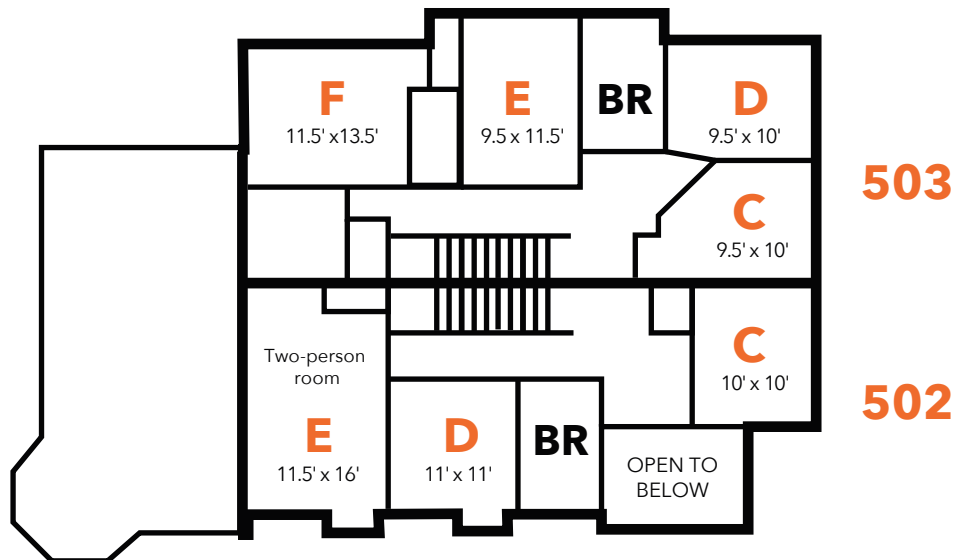
Bedrooms in St. Sebald Haus are single rooms and carry an additional single-room charge.  
 Room dimensions are approximate within four inches.  
 Closets are not included in dimensions or shown on this floor plan.  
 Living room, dining room and kitchen dimensions are not listed as they are furnished and vary by building.  
 Ceiling height is approximately 8'.

**BR** = Bathroom    **DR** = Dining Room  
**LR** = Living Room    **KIT** = Kitchen

### Second Floor



### Third Floor



Bedrooms in Saginaw Haus are single rooms and carry an additional single-room charge, except 502E.  
Room dimensions are approximate within four inches.  
Closets are not included in dimensions or shown on this floor plan.  
Living room, dining room and kitchen dimensions are not listed as they are furnished and vary by building.  
Ceiling height is approximately 8'.

**BR** = Bathroom    **DR** = Dining Room  
**LR** = Living Room    **KIT** = Kitchen